

INTERNAL LOCATION

This product is suitable for Zone 3 only. (Not Zone 0, 1, or 2).

Zone 1: the area around the bathtub or shower basin up to a height of 2.25m above the floor and at a radius of 1.2m the water outlet.

Zone 2: is limited by the vertical planes external to zone 1 and parallel vertical plane(s) 0.60m external to zone 1.

Note

Installation must be by a qualified electrician (BS7671).

Read before installation and retain for future reference.

Ideal for Indoor use.

Always check for concealed pipes and cables before installation.

Wood or brick mounting surface.

240V-50Hz Incoming supply.

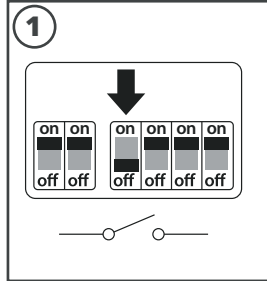
NOTE

DO NOT MODIFY - this will invalidate the warranty and could be dangerous.

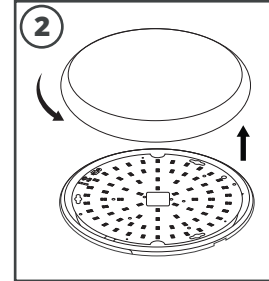
Waste electrical products should not be disposed of with household waste.

Please recycle where facilities exist.

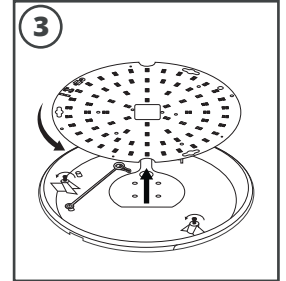
Check with your Local Authority or retailer for recycling advice.



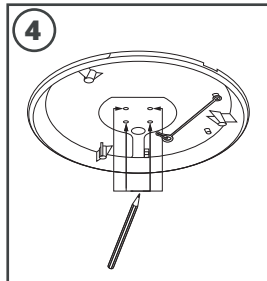
Switch OFF at mains supply before installing



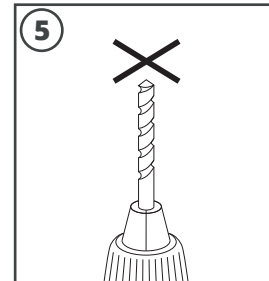
Hold the base securely and twist to unlock and remove the diffuser



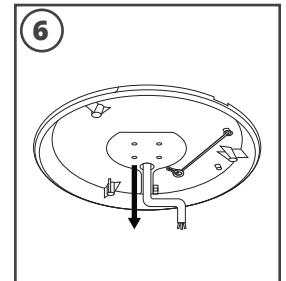
Loosen screws and twist to remove gear tray from the base, detach safety belt



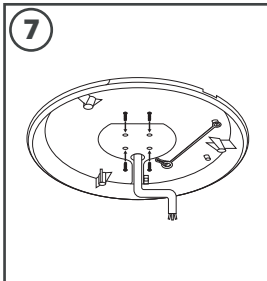
Ensure product is located in the correct location and mark surface



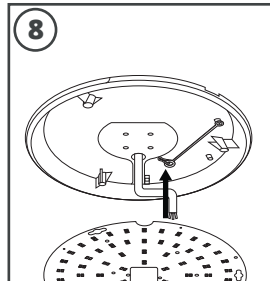
Use correct drill to drill screw holes



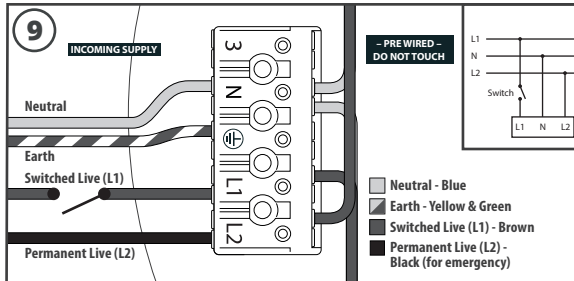
Pull power supply through hole in the base plate



Install the fixing screws to the base plate

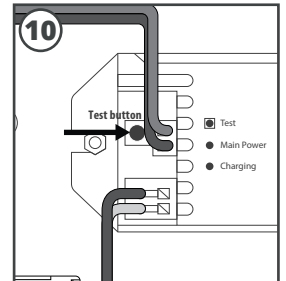


Attach the safety belt to gear tray

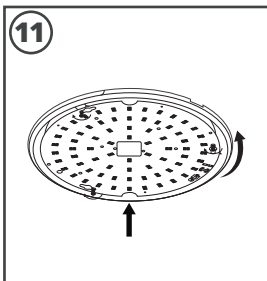


Press the individual terminal and insert the correct incoming supply before releasing the terminal to secure. The product MUST be earthed

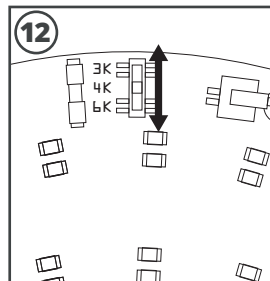
Note: Please ensure there are no switches, PIRs etc in the permanent live feed, as switching of the emergency pack will reduce the battery's life considerably



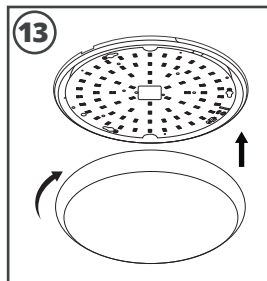
Push the "Test" button on the battery pack for at least 2 seconds. If LEDs are lit, the emergency function is working.



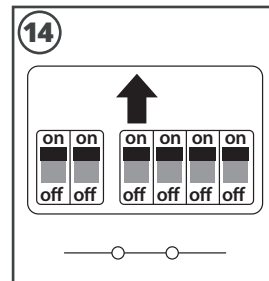
Align gear tray with screws and tighten



Use the CCT selection switch on the gear tray to select the desired colour temperature



Push and twist the diffuser back into place



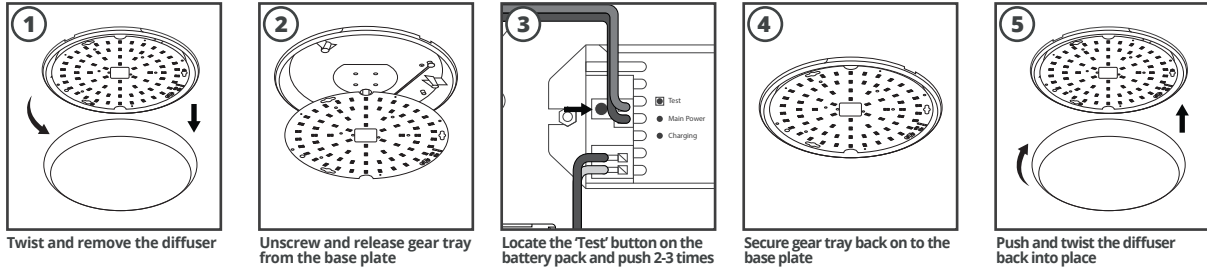
Return power. Switch ON at mains supply

Emergency Function

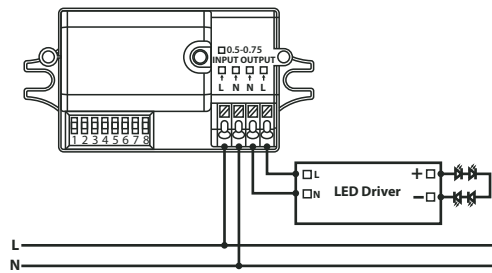
IMPORTANT: The emergency pack battery will only retain the stored charge for a period of approximately 3 to 4 months - during the transit and storage period the battery may have fully discharged. The battery status is signified by the LED light on the battery pack once power is restored - if the LED status light is green the emergency pack is charged. If the green LED is NOT illuminated the battery has discharged and you must follow the steps below to re-charge.

IMPORTANT WARNING: This product must be fitted by a qualified electrician. If the emergency battery power has discharged - initiate the battery by pressing the TEST button 2-3 times to reactivate the protection circuit into a charging state.

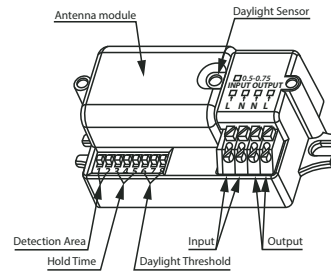
The emergency pack has a self test function - to optimise the battery packs lifetime it is recommended for the battery to be charged and discharged every 3 months by a qualified electrician.



Wiring



Structure



DIP Switch Settings

1&2 - Detection Area (Sensitivity) 3, 4 & 5 - Hold Time



	1	2
I	100%	On
II	75%	On
III	50%	On
IV	25%	-



	3	4	5
I	5 Secs	On	On
II	30 Secs	On	On
III	1 Min	On	On
IV	3 Mins	On	On
V	5 Mins	-	On
VI	10 Mins	-	On
VII	20 Mins	-	On
VIII	30 Mins	-	-

6, 7 & 8 - Daylight Threshold



	6	7	8
I	2 Lux	On	On
II	10 Lux	On	On
III	25 Lux	On	-
IV	50 Lux	On	-
V	Disable	-	-

*Disable means the daylight sensor does not work. The sensor will turn on light once motion is detected regardless of ambient light level.

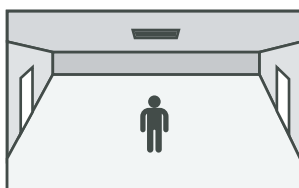
Factory Setting

Detection Area: 100%, Hold Time: 5secs, Daylight Sensor: Disable

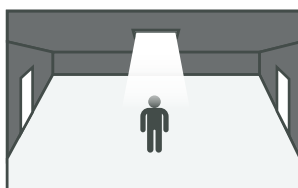
Initialization

After power on, the sensor automatically turns on light at 100% brightness. During the initialization, the sensor is not able to detect movement.

Sensor Function



With sufficient ambient light, the light will not switch on even if motion is detected



With insufficient ambient light, the sensor switched on the light when motion is detected.



Once the hold time is elapsed, the sensor switches off the light when motion is no longer detected.